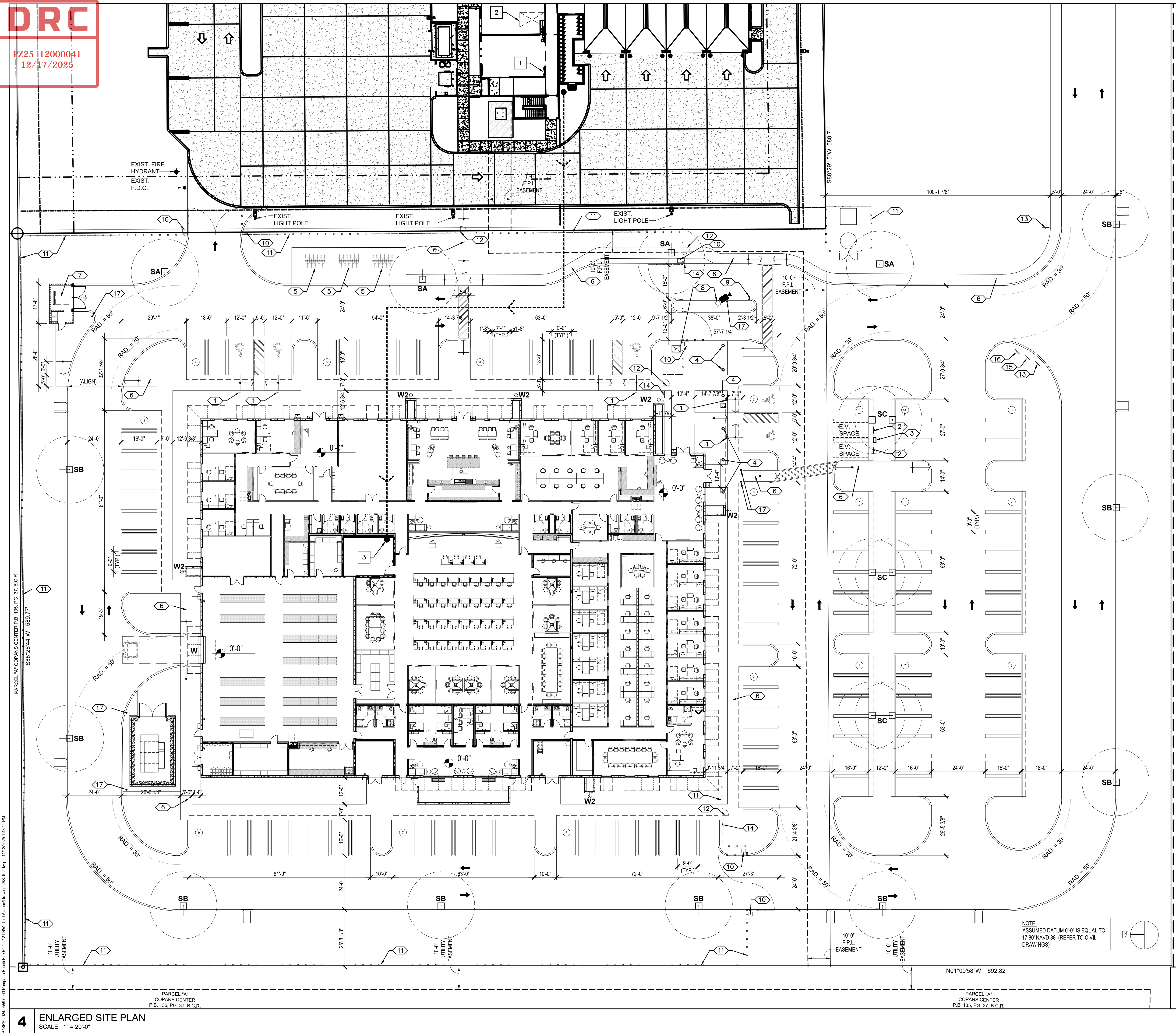


PZ25-12000041  
12/17/2025



- 1-0" X 1'-6" X .080 ACCESSIBLE PARKING SPACE SIGN WITH SYMBOL OF ACCESSIBILITY (REFER TO CIVIL DRAWINGS FOR ADDITIONAL INFORMATION).
- 1-0" X 1'-6" X .080 ELECTRICAL VEHICLE PARKING SPACE SIGN WITH CITY STANDARD NOTATION AND GRAPHICS (REFER TO CIVIL DRAWINGS FOR ADDITIONAL INFORMATION).
- ELECTRIC VEHICLE CHAD CHARGING STATION AS MANUFACTURED BY "CHARGEPOINT, INC.", MODEL CT4021 OR APPROVED EQUAL (REFER TO ELECTRICAL DRAWINGS FOR ADDITIONAL INFORMATION).
- BEGA BOLLARD TUBE 84 623, IMPACT OF TRUCK < 7.5 TONS, SPEED < 50 KILOMETERES / HOUR, INSTALL A COMPLETE CONCRETE STRUCTURAL FOUNDATION AS REQ'D. (REFER TO X / A-XXX).
- "RAMBLER" (11-BIKE) RACK AS MANUFACTURED BY "HUNTCO" SITE FURNISHINGS W/ "RED" POWDER COAT FINISH, MOUNTED TO NEW REINFORCED CONCRETE SLAB. SUBMIT SHOP DRAWINGS TO ARCHITECT FOR APPROVAL. (REFER TO 1AS-103).
- 5'-0" OR 7'-0" WIDE X 4" THICK 3,000 PSI CONCRETE SIDEWALK WITH INTEGRAL CONCRETE D-CURS MASTERFIBER F100 AS MFR'D. BY BASF CORP. OR FIBERMESH 650 AS MFR'D. BY PROPEX CONCRETE, OVER 10 MIL. VAPOR BARRIER ON WELL COMPACTED SAND FILL. SUBMIT PRODUCT (NOA) TO ARCHITECT FOR APPROVAL PRIOR TO INSTALLATION. PROVIDE 8" X 8" THICKENED EDGE W/ (1) - CONT. #5 BAR AT ALL LANDSCAPE AREAS. PROVIDE J' DEEP SAW-CUT CONTROL JOINTS AT 5'-0" O.C. MAXIMUM AND EXPANSION JOINTS AT 60'-0" O.C. MAXIMUM. (REFER TO 2AS-103).
- DUMPSTER AND RECYCLE BIN ENCLOSURE (REFER TO 1AS-101).
- BADGE ACCESS, KEY PAD, AND INTERCOM/CAMERA WITH PEDESTAL (HEAD MIN. 8" HIGH X 10" WIDE). G.C. TO PROVIDE WEATHERPROOF OUTDOOR ENCLOSURE INSIDE OF GATE CLOSE TO PEDESTAL.
- KNOX KEY SWITCH MODEL #3502 LOCATED WITHIN 28'-0" FROM GATE, 72" ABOVE FINISH DRIVE (REFER TO XX/AS-XXX).
- VIKING SWING GATE OPERATOR, MODEL T-21 FOR 12'-0" WIDE X 8'-0" HIGH & 15'-0" WIDE X 8'-0" HIGH "BLACK" POWDER COAT ALUMINUM PICKET GATE 1,500 LBS. MAX. (REFER TO XX / A-XXX).
- 8'-0" HIGH "WHITE" POWDER COATED ALUMINUM PICKET FENCE (REFER TO 5 / AS-103).
- 8'-0" HIGH X 3'-0" WIDE "WHITE" POWDER COATED ALUMINUM LOCKABLE PEDESTRIAN GATE WITH CARD READER ACCESS (REFER TO 2I AS-103).
- PROVIDE 18"W X 24"H ALUMINUM SIGN ON POST AT 6'-6" TO 7'-0" TO BOTTOM FROM GRADE "NO OVERNIGHT PARKING".
- PROVIDE 18"W X 24"H ALUMINUM SIGN ON POST AT 6'-6" TO 7'-0" TO BOTTOM FROM GRADE BROWARD COUNTY TRESPASS PROGRAM SIGN.
- PROVIDE 18"W X 24"H ALUMINUM SIGN ON POST AT 6'-6" TO 7'-0" TO BOTTOM FROM GRADE "NO VEHICLE PARKING OR LOITERING OTHER THAN OWNER'S / AUTHORIZED GUESTS".
- PROVIDE 12"W X 18"H ALUMINUM SIGN ON POST AT 6'-6" TO 7'-0" TO BOTTOM FROM GRADE "UNAUTHORIZED VEHICLES TOWED AT OWNER EXPENSE".
- PROVIDE 6" DIAMETER X 4'-0" ABOVE GRADE PARKING SIGNED FILL GALV. STEEL BOLLARD PAINTED SAFETY YELLOW.

<b>3</b>	<b>SITE KEY NOTES</b>
----------	-----------------------

INFRASTRUCTURE KEY NOTES:

- 1 EXISTING DATA CONDUITS TO FIRE STATION #61 DATA ROOM ON SECOND FLOOR.
- 2 INDICATES DATA ROOM OUTLINE LOCATION AT FIRE STATION #61 SECOND FLOOR.
- 3 PROVIDE 2" EMPTY CONDUIT FOR FUTURE FIBER OPTIC CABLES FROM FIRE STATION #61 DATA ROOM TO TELECOM / SERVER ROOM #F-137. CONTRACTOR SHALL COORDINATE WITH FIRE STATION #61 BATTALION CHIEF PRIOR TO WORK.

## 2 INFRASTRUCTURE KEY NOTES

**SRS**  
A Zyscovich Company


ARCHITECTURE · PLANNING · INTERIOR DESIGN

1800 Eller Drive Suite 500  
Fort Lauderdale, FL 33316

T 954.961.6806  
F 954.961.6807

[www.synalovski.com](http://www.synalovski.com)

Merrill Ann Romanik  
AR 0015810  
Seal



The seal is circular with a rope-like border. The outer ring contains the text "STATE OF FLORIDA" at the top and "LICENSED ARCHITECT" at the bottom. The inner ring contains the name "MERRILL ANN ROMANIK". In the center, there is a five-pointed star above the license number "AR0015810".

# POMPANO BEACH FIRE / EOC FACILITY

2121 NW THIRD AVENUE  
POMPANO BEACH, FL 33060

CLIENT: CITY OF POMPANO BEACH

[illegible]

DESIGN DESIGN  
DELIVERABLE: DEVELOPMENT  
ISSUE DATE: 10/02/2025

PROJECT NUMBER: 2024-0559.0000

DRAWN BY: CB

Copyright (c) by SYNALOVSKI ROMANIK SAYE, LLC  
All Rights Reserved.

ENLARGED SITE PLAN

SHEET NUMBER:

# AS-102

P:\SRS\2024-0559.0000 Pompano Beach Fire EOC 2121 NW Third Avenue\Drawings\AS-102.dwg 11/12/2025 1:43:11 PM